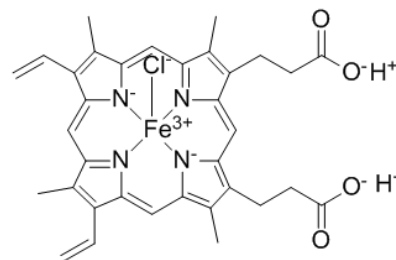


**Product Name** : Hemin  
**Cat. No.** : PC-45633  
**CAS No.** : 16009-13-5  
**Molecular Formula** : C<sub>34</sub>H<sub>32</sub>ClFeN<sub>4</sub>O<sub>4</sub>  
**Molecular Weight** : 651.9403  
**Target** : Autophagy  
**Solubility** : DMSO: 6.6 mg/mL



## Biological Activity

Hemin, a physiological erythroid maturation stimulator, is able to induce the expression of critical autophagic genes (Map1a1b (LC3), Beclin-1 gen, Atg5) in an erythroleukemia cell type. Hemin increases the size of autophagic vacuoles and induces mitophagy in K562 cells; a heme oxygenase (HO)1 inducer.

## References

- Fader CM, et al. *Biol Cell*. 2016 Apr;108(4):77-95.  
Higdon AN, et al. *Am J Physiol Heart Circ Physiol*. 2012 Apr 1;302(7):H1394-409.

**Caution: Product has not been fully validated for medical applications. Lab Use Only!**

E-mail: tech@probechem.com